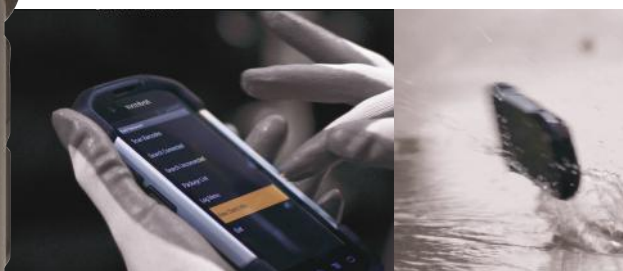




# TC70

## MOBILE COMPUTER



**YOUR FRONT LINE  
TO A SMARTER  
ENTERPRISE**



# THE RIGHT DEVICE MAKES ALL THE DIFFERENCE

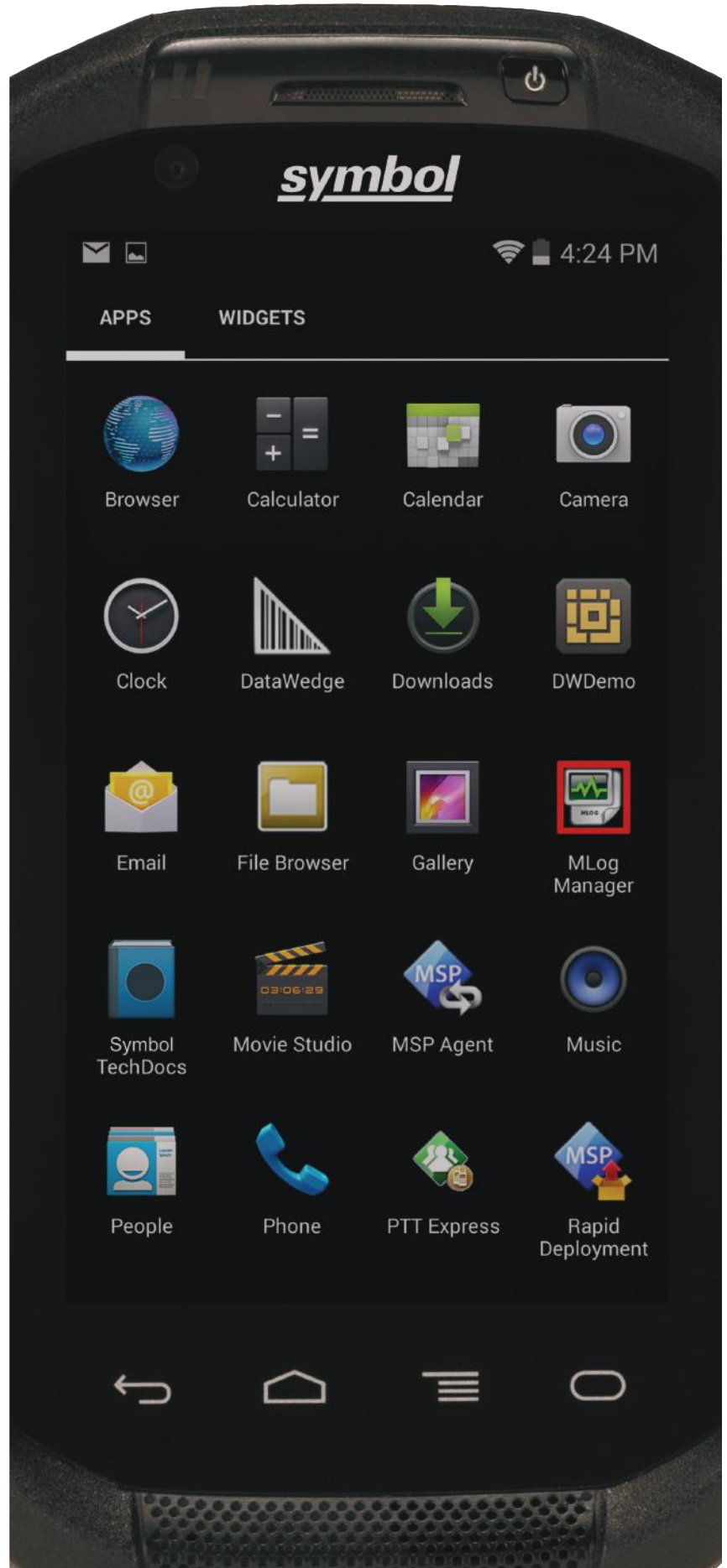
In today's world, it takes the best service to earn a sale and repeat business. In order for your front line workers to consistently deliver that level of service, they'll need to execute every task as quickly and efficiently as possible. With a mobile computer in hand, they can. But you need a business-grade device with enterprise-class durability and functionality — while your workers want a device that is every bit as refined and easy to use as their own personal smartphones and tablets.

## Introducing the TC70. The touch computer that has it all.

This professional grade Android™ device marries the intuitive and elegant smartphone experience with today's most advanced enterprise-class features. Your workers get everything they need to work smarter and faster, able to deliver the kind of service that will put your business a step above the competition. You get a rugged device built to last for years, with everything you need to streamline your workflows and maximize your return on investment — from world-class voice and data features to snap-on accessories that let you add new capabilities, when and where you need them.



**THE TC70**  
The right device for  
your workers. The  
right device for  
your business.



# WORLD-CLASS DATA CAPTURE

With our advanced data capture features, your workers can capture practically any type of information, more easily, faster and more accurately.

**Capture all the data you need to streamline your business processes**

ANY BAR CODE

SIGNATURES

HIGH RESOLUTION PHOTOS

HIGH RESOLUTION VIDEOS

VIDEO CALLS

NFC

## MAKE DATA CAPTURE EASIER THAN EVER WITH OUR ADVANCED FEATURES

### Lightning-fast bar code capture

Zebra-only patented PRZM technology, a megapixel sensor and advanced optics allow your workers to capture bar codes as fast as they can press the scan button.

### Capture bar codes in any condition with our advanced decode algorithms

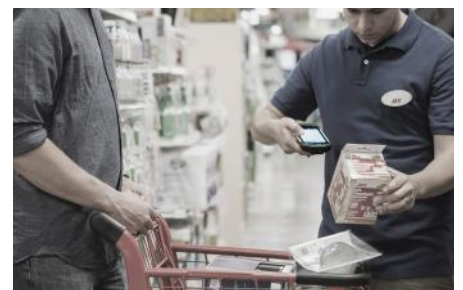
The retail store, warehouse and manufacturing floor can be tough on bar codes. With the TC70, workers can capture even dirty, scratched, smudged or poorly printed bar codes, eliminating the time and errors that can occur when bar code data is entered manually.

### An extraordinary working range and wide field of view for exceptional scanning flexibility

With a 50 percent increase in scanning range over our prior generation scanner, workers can capture bar codes at near contact to as far as 32 in./81 cm away — making it easy to take inventory and capture bar codes on items in carts in a retail store. Labels with multiple bar codes are no longer a challenge — workers can capture them all with one press of a scan button. And even large bar codes can be captured at close range.

### Let your workers change input modes on the fly

Throughout the day, your workers will perform different tasks. Our dual mode capacitive touch display allows workers to choose their preferred pair of data input modes — finger and stylus, or finger and gloved finger — and switch between the two modes on the fly. No need to change settings — and users can change pair selection at any time.





# BUSINESS TOUGH

The Symbol TC70 gives your workers an edge by combining the amazing ease of use of a consumer device with the no-nonsense durability, dependability and performance that enterprises demand.

## DROP TESTED

Everyday drops are inevitable — the TC70 is ready to handle them all with its 8 ft./2.4 m Military Standard drop rating or multiple 6 ft/1.8 m to concrete certification.

## TUMBLE TESTED

The TC70 easily handles the real-world tumbling that often happens after a device is dropped. Even after 2,000 consecutive 3.2 ft./1 m hits in our punishing tumble drum, the TC70 continues to operate dependably.

## IP67 SEALING

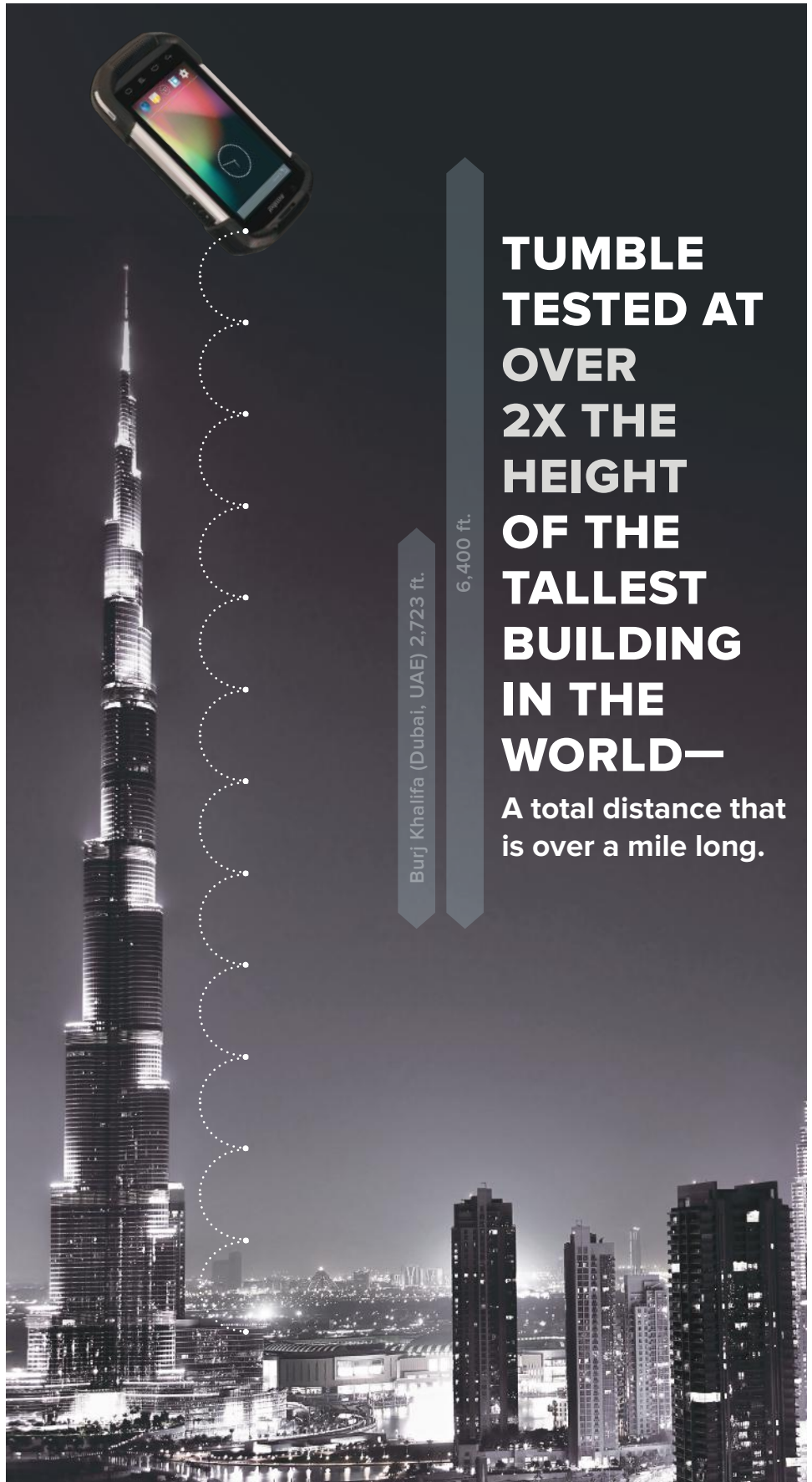
Dust, spilled beverages and even a drop in a bucket of water are no match for the TC70. The device is dust-tight and sealed to handle 30 minutes of complete immersion in water.

## CORNING® GORILLA® GLASS 2 TOUCH PANEL AND SCANNER EXIT WINDOW

Two of the most vulnerable components on any mobile device are fortified with one of the toughest materials available. With Gorilla Glass 2, our touch panel and scanner exit window can flex when bumped or dropped — instead of shattering or scratching.

## INDUSTRIAL GRADE CONNECTORS

With industrial grade connections, the TC70 is ready for years of insertions into cradles and connections to cables — unlike consumer grade connectors, which can wear out quickly.



The TC70 continues to operate reliably, even after 2,000 3.2 ft./1 m consecutive tumbles — a total distance of 6,400 feet — more than twice the 2,723 ft. height of the Burj Khalifa tower in Dubai.

# ANDROID KITKAT FORTIFIED FOR THE ENTERPRISE



Mobility Extensions (Mx) is installed on every TC70, providing a layer of features that you can activate to transform consumer-class Android KitKat into an enterprise-class operating system.



## Mx SUITE

### Mx DATA CAPTURE

**We make it easy to take advantage of all of our data capture features.**

We provide all the tools you need to easily integrate the enterprise-class data capture features of the TC70 into any Android application — including DataWedge, integrated support for our advanced decode algorithms and our Android DataCapture Software Development Kit.

### Mx WIRELESS

**Give your workers wired-style dependable Wi-Fi connectivity throughout every inch of your facility.**

Unlike consumer-grade radios, the enterprise-class Wi-Fi radio in the TC70 is loaded with features to give your workers a dependable and fast connection to your backend business applications — such as fast roaming.

### Mx MOBILE APPLICATION MANAGEMENT

**Completely control which applications can be installed and when they are updated.**

With Mx, you create a white list to control what applications users can access and download. And with silent install, you're in control of the application installation and update process — users are no longer presented with the option to delay or decline an update.

### Mx SECURITY

**Get the advantages of Android you want with the security your enterprise needs.**

Now, you can lock users into a single application or lock users out of specific device features — such as USB or Bluetooth™. Select which files you want to protect with government grade encryption, helping ensure security doesn't come at the cost of device performance. And since encryption keys are centrally managed, SD cards can be moved between devices as needed.

### Mx MOBILE DEVICE MANAGEMENT (MDM)

**Our Android-based mobile computers are always under your control.**

Mx allows you to centrally manage, monitor and troubleshoot your TC70s and their attached peripherals with your current MDM application. In addition, when workers enter their ID and password, you can automatically allow access to the right applications and provide the right data access levels and the right features — making the TC70 the ideal multi-user device.

# WORLD-CLASS AUDIO

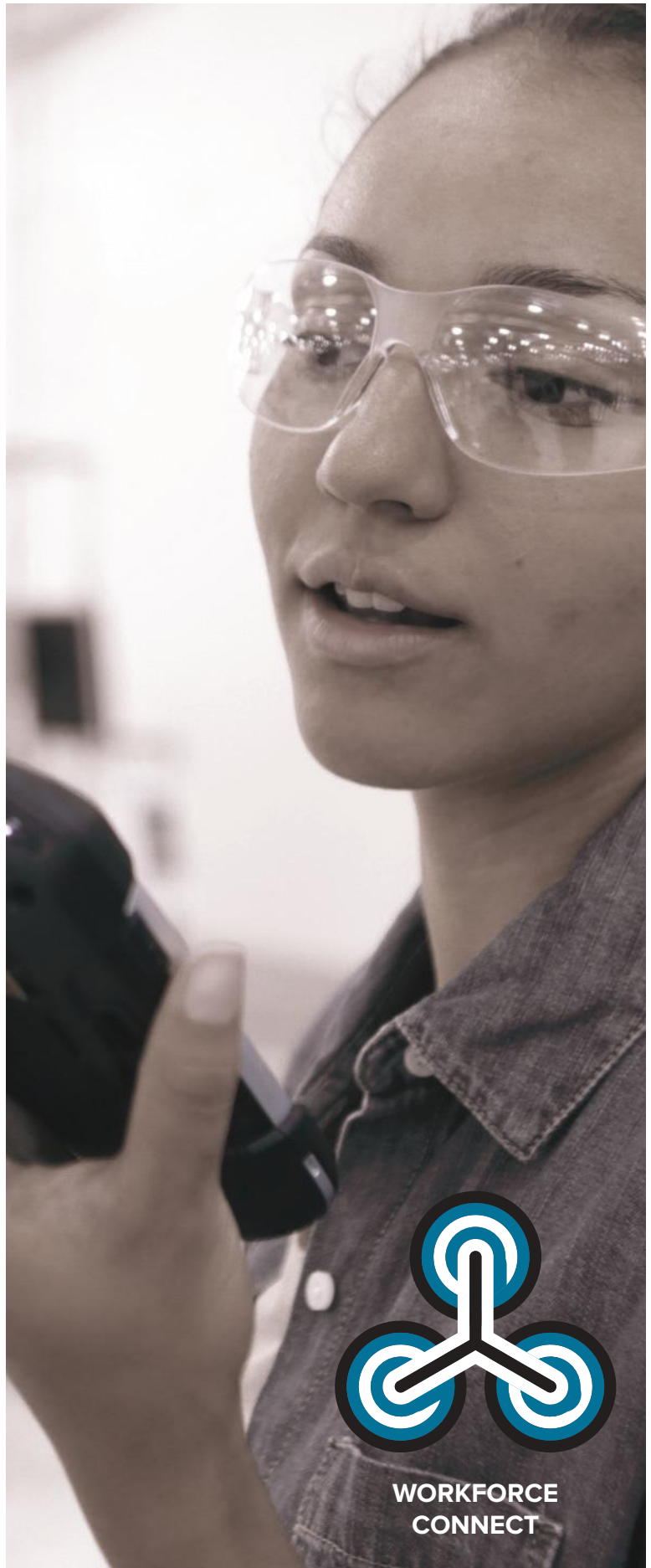
In your business, voice communications are as important as data access. That's why the TC70 is built from the inside out to deliver enterprise class voice, providing your users with more types of voice calls and superior audio clarity.

## **INSTANT PUSH-TO-TALK, RIGHT OUT OF THE BOX.**

Since the Workforce Connect Push-to-Talk Express client software is integrated into every TC70, the moment the TC70 is removed from its box, workers can place two-way radio style calls to co-workers and managers carrying TC70s, other Zebra mobile computers and two-way radios (requires Radio Link Express). The result? Superior workforce collaboration.

## **EXCEPTIONAL AUDIO CLARITY ON BOTH ENDS OF EVERY CALL.**

While the audio quality of consumer-class smartphones can make it difficult to hear in noisy environments, the TC70 offers three microphones, advanced noise cancellation technology and a front facing speaker with four times the loudness of popular smartphones — louder than a passing subway train. The result? Workers can hear every word of every call — even in a retail store at the peak of the holiday shopping season or a busy manufacturing floor.



# AN INNOVATIVE ACCESSORY FAMILY

Get the enterprise class accessories you need to reduce the cost of device management, improve power management and easily add new capabilities. Choose from data and charging cables, a snap-on magnetic stripe reader (MSR) to create an instant mobile point of sale, headsets for hands-free voice, charging cradles, holsters, hand straps and more.

## UNIQUE 2-SLOT AND MULTI-SLOT SHARECRADLE

Make backroom device management easier and more cost-effective with our ShareCradle, which can charge TC70 and future Zebra mobile computers, along with their batteries. The ShareCradle is easy to reconfigure and is available in charge only and charge/data models.

## SNAP-ON MAGNETIC STRIPE READER

Turn any TC70 into a mobile point of sale in a split second, allowing retail associates to ring up sales anywhere in the store and help reduce long lines in POS lanes.



## POWERPRECISION BATTERY TECHNOLOGY FOR BETTER POWER MANAGEMENT

Our premium grade cells deliver higher capacity and longer lifecycles, ensuring full-shift power and reducing battery costs. And real-time visibility into battery metrics helps identify and eliminate batteries that can no longer hold a full charge from the battery pool.

## SNAP-ON TRIGGER HANDLE

When associates need to perform a high-volume scanning task, such as inventory, the snap-on trigger handle brings instant comfort and boosts scanning productivity.



FOR THE COMPLETE LIST OF  
ACCESSORIES, PLEASE VISIT  
[WWW.ZEBRA.COM/TC70](http://WWW.ZEBRA.COM/TC70)



## IN RETAIL...



### Let the TC70 supercharge your associates and their managers.

With the TC70, your associates can ring up purchases and get the answers to customer questions anywhere in the store, take inventory and complete markups and markdowns with lightning speed and sure-fire accuracy, complete a new loyalty application and much more. And managers have the tools they need to better manage the associate workforce, monitor real-time inventory levels to eliminate stockouts and ensure planogram compliance — without ever leaving the sales floor.

#### The result?

**INCREASED SALES.**

**A GREAT SHOPPING EXPERIENCE.**

**BETTER INVENTORY MANAGEMENT.**

**MAXIMUM WORKFORCE EFFICIENCY.**

**BETTER CUSTOMER SERVICE.**



## IN MANUFACTURING...



### Let the TC70 improve plant uptime — your "lean" score.

With the TC70, your engineers will receive electronic work orders, complete with access to equipment maintenance history and procedures — everything they need to perform the right maintenance on the right machine at the right time. And your managers have everything they need to keep your plant up and running at peak efficiency.

#### The result?

**MAXIMUM ASSET LIFECYCLE.**

**MAXIMUM PLANT UPTIME.**

**MAXIMUM WORKFORCE EFFICIENCY.**

**MORE THROUGHPUT.**

**...AND MORE SATISFIED CUSTOMERS.**

## IN THE WAREHOUSE...



### Let the TC70 improve efficiency and accuracy in your warehouse operations.

With the TC70 in hand, your warehouse workforce can move incoming materials from dock-to-stock and fulfill customer orders faster than ever, while managers can better direct the workforce and monitor inventory levels to eliminate the high cost of stockouts.

#### The result?

**TIMELY DELIVERY OF EVERY ORDER.**

**HIGHLY ACCURATE ORDER FULFILLMENT.**

**MAXIMUM WORKFORCE EFFICIENCY.**

**IMPROVED INVENTORY MANAGEMENT.**

**INCREASED CUSTOMER SATISFACTION.**

WHEN IT COMES TO  
BOOSTING SALES AND  
CUSTOMER LOYALTY, GET  
THE DEVICE THAT MAKES  
ALL THE DIFFERENCE—  
**THE TC70.**



FOR MORE INFORMATION ABOUT THE TC70, PLEASE VISIT  
[WWW.ZEBRA.COM/TC70](http://WWW.ZEBRA.COM/TC70) OR OUR GLOBAL CONTACTS DIRECTORY AT  
[WWW.ZEBRA.COM/CONTACT](http://WWW.ZEBRA.COM/CONTACT).

